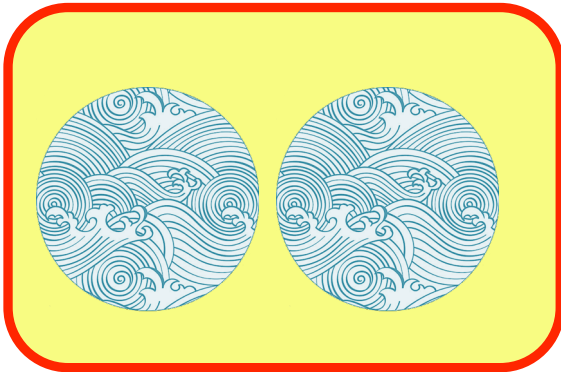


INSTRUCTIONS

Whale and Shark Toy

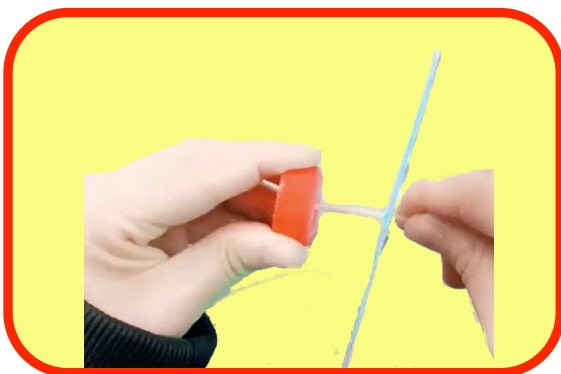
You will need: paper, CDs, scissors, pens/pencils, glue, 2x metal nuts/small and weighted, wooden skewer/rod, bottle caps, corrugated cardboard, white tack/glue gun



Colour the round templates (or draw and colour your own) and stick to the label sides of 2 CDs.



Carefully make a hole in 2 bottle tops (milk bottles are the easiest).



Push wooden rod/skewer through middle of CD and through the hole in the bottle top and secure in place on the inside of the bottle top with a glue gun or white tack.



Cut 2 strips of corrugated card and stick your coloured whale to one and the shark to the other. Mark with a dot 5 cm from the bottom.

INSTRUCTIONS

Whale and Shark Toy

NB. Leave a bit of space between the things you place on wooden rod/skewer.



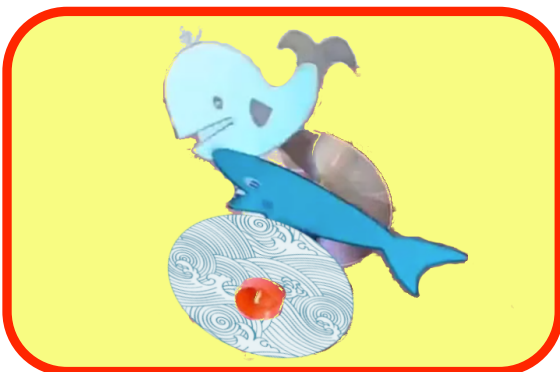
Stick the metal nuts or small weighted object to the bottom of the corrugated card.



Push the wooden rod/skewer through the dots you marked so your whale and shark are now also on the rod.



Push the second CD and bottle top onto the wooden rod/skewer and secure in place (you may need to trim the rod if it's very long).



Give your toy a push and watch the whale and shark race along!