



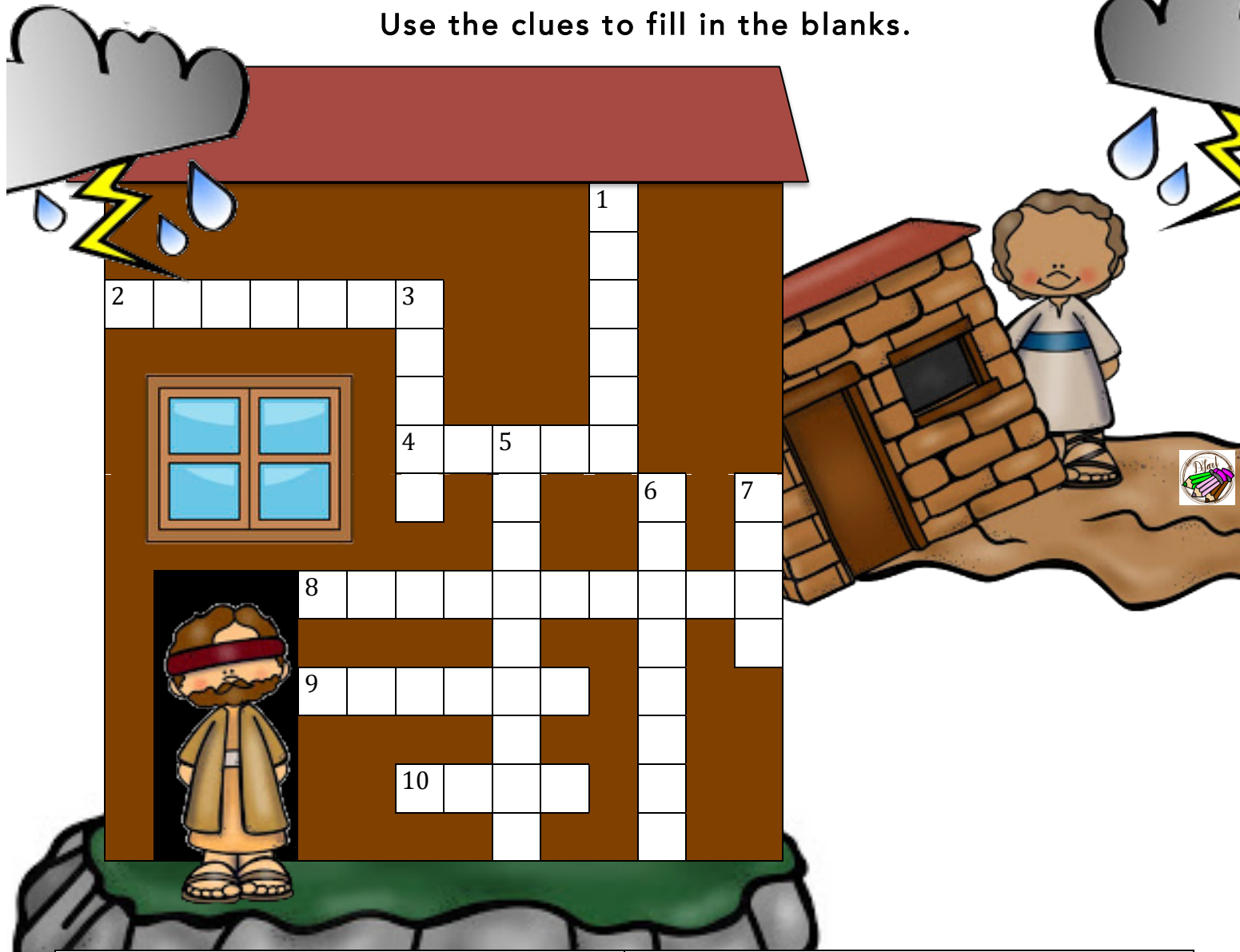
# Wise and Foolish Builders Crossword



“Everyone who hears these things I say and obeys them is like a wise man. The wise man built his house on rock.”

Matthew 7:24 ICB

Use the clues to fill in the blanks.



ACROSS	DOWN
2. This type of person built their house on the sand.	1. We get more of this the more we listen to and obey God's word.
4. Violent weather.	3. Compared to a person's life in the story.
8. Important to make a house strong when building.	5. Follow God's word with this.
9. Use your ears to grow strong and wise.	6. One was foolish and one was wise.
10. A strong foundation in the story.	7. Don't build your house on this.

WISDOM	OBEDIENCE	LISTEN	FOOLISH	SAND
BUILDERS	HOUSE	STORM	FOUNDATION	ROCK